

CATALOGUE OF WORKS

Artist — Carali McCall



Artist Portrait, Running Restraint / Circle Drawing: 2hrs 24min, at Intervals of Jupiter I Weight of Things NOLA, 2023



Carali McCall – b. Canada, 1981; living and working in London UK.

An artist whose practice is focused on performance and drawing, yet spans sculpture, video/photography, sound and writing.

In exploring the role of the body, McCall is interested in physicality and the thresholds of materials. Artworks have been made by either carving through the landscape while running, drawing a continuous line with graphite on paper, or holding a bit of the landscape (a rock) as an act of endurance as a performance. Through movement and stillness, the work aims to address what it might mean to be human and expand conceptual-based art practices.

Awarded MFA at Slade School of Art UCL, PhD at Central Saint Martin's UAL;

McCall is co-author of the Bloomsbury publication, *Performance Drawing: New Practices since 1945* (2020); recent projects include movement director for Editorials and written academic article on Live Art for Routledge; recent 'Circle Drawing' and 'Performing Rock' performances have been included at Blunk Space in California; Guggenheim in Bilbao, CLOSE Ltd Gallery in Somerset.

Recent group exhibitions include *Lines of Empathy* at Patrick Heide Contemporary Art in London, *i miss the Land but does the Land miss me?* Art Seen in Cyprus; and a solo exhibition at Gryder Gallery in New Orleans, *Intervals of Jupiter I Weight of Things* 7th Oct – 30th Nov 2023.

CIRCLE DRAWINGS



Circle Drawing: 2hrs 24min, 2019

Circle Drawing (2004 – 2023)

‘Circle Drawing’ is a series of large-scale artworks made with graphite on paper in front of a live audience, drawing one continuous line (in the shape of a circle) at full arm's length until exhaustion and the graphite stick drops from the grasp of her hand; most performances endure 2hrs- 4hrs of constant drawing; each performance becomes a battle between keeping going, the action, and the materials; each work is titled by its duration and depending on situations and conditions, thresholds of endurance, some drawings have rips and some with blood.

McCall began this performance-based practice in 2004 while an art graduate at the University of Toronto, in Canada studying Art and Art History. In 2007 the work became the foundation for a practice-based research PhD, thesis titled *The Line is a Brea(d)thless Line: introducing the physicality of running as a form of drawing*, and co-authoring the publication title: ‘Performance Drawing: New Practices since 1945’ (Bloomsbury 2020).

Recent live performances include Blunk Space, California 2023, Close Ltd Gallery 2023, Aubert Jansem, Geneva Switzerland, 2023.



Circle Drawing: Green-Black / Gold, 2019

Circle Drawing: Mid-sized Series (2018- 2023)

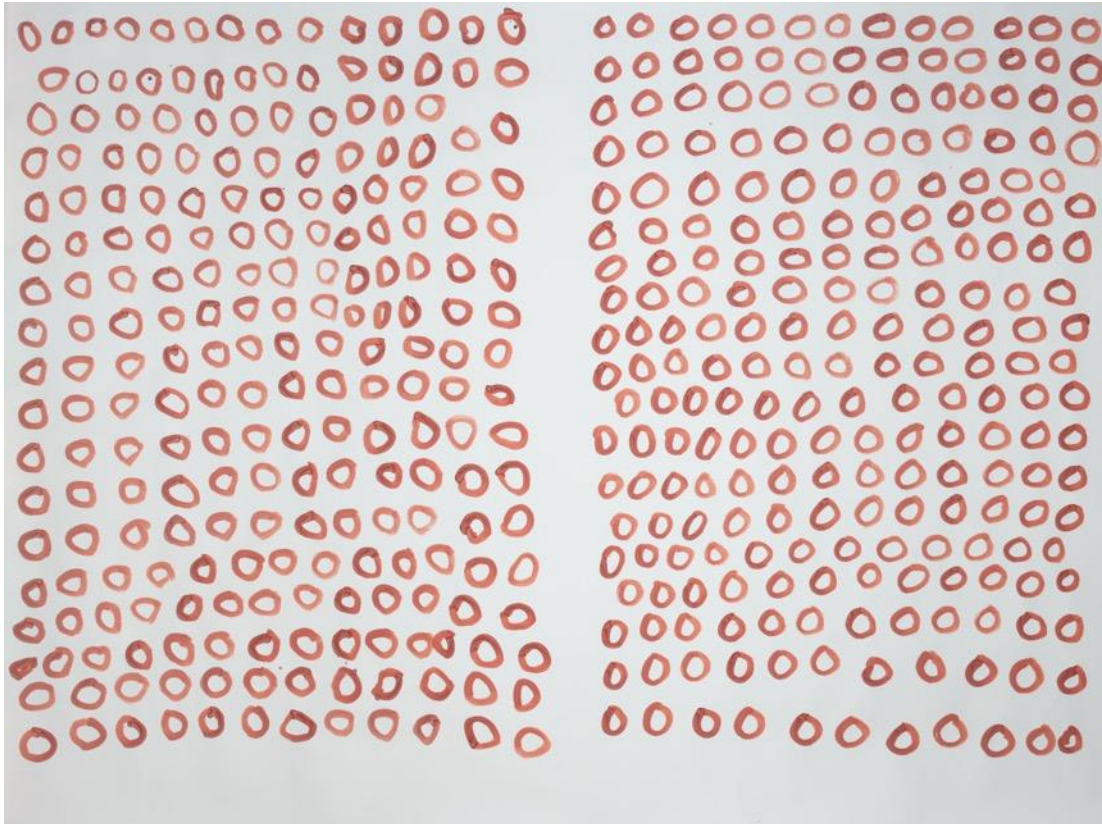
A mid-sized Circle Drawing series using gold, silver and pigment to pre-treat the surface of the paper before drawing; these works combine pigments and powdered gold with solvents. After the paper is cut, folded and prepared McCall performs by drawing one continuous line with graphite in an attempt to exhaust the materials.



Circle Drawing: Layers (2019 – 2023)

‘Circle Drawing: Layers’ is part of another series whereby using a collection of mid-sized durational-drawings: of graphite on paper with pre-treated materials such as gold, silver, and red and blue gouache; this work is compiled of 10 artworks; each layer of work hand-cut in the shape of a circle that unveils and supersedes the work that came before; exploring the depth and sculptural means of malleable drawing materials. The work is mounted and framed (walnut) by Brider + Bull Ltd, London.

Circle Drawing, Layers, 2019

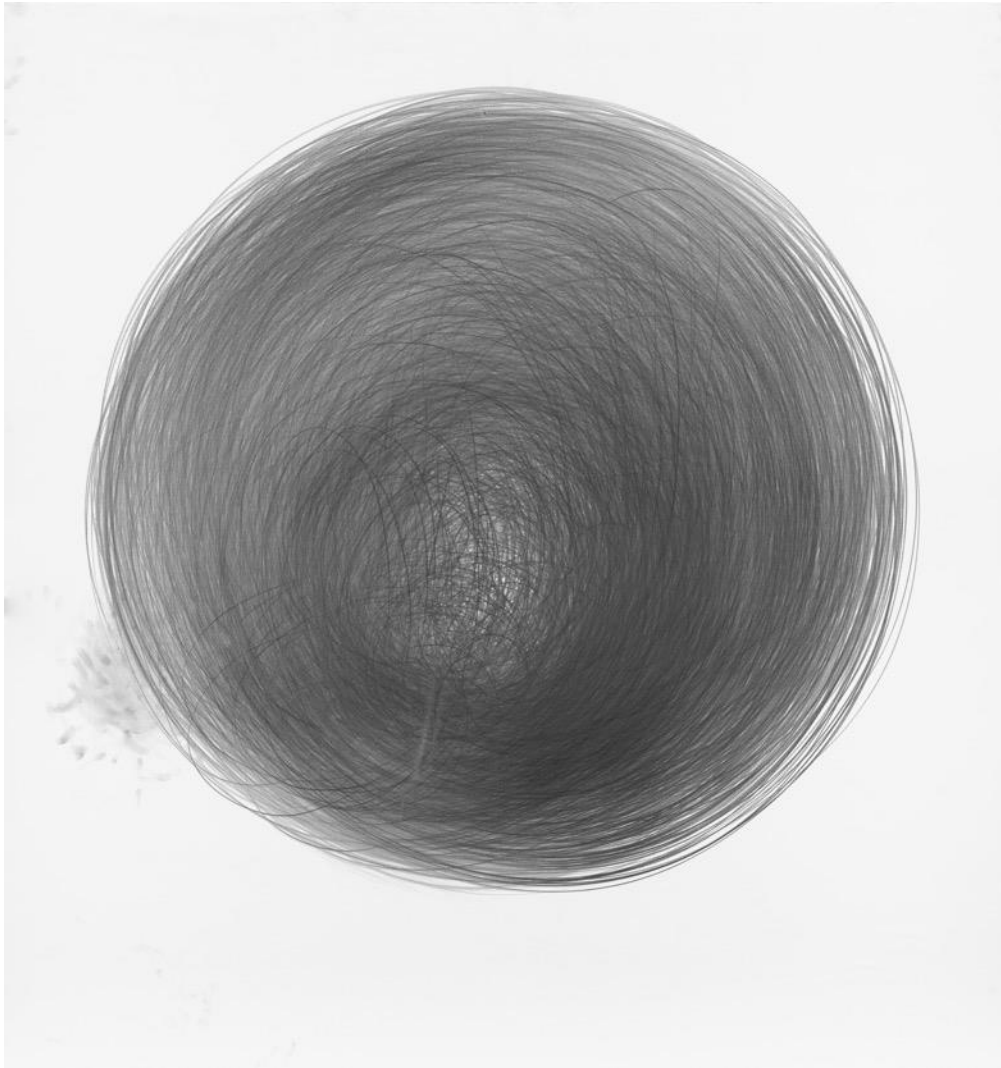


Circle Drawing, Left / Right, 2023

Circle Drawing: Left / Right, (2029 – 2023)

In all the previous Circle Drawing series, McCall uses 4B graphite on paper with her right arm; and in this series, Circle Drawing: Left / Right, marks on paper are made with either graphite or pink/red pigment, first, with the left-hand painting rows of circles, then with the right.

McCall found that after long endurance-based performances, to help recover and condition the body as a means of balancing; studio-based drawings emerged that focused on the left side of the body while equally exercising the right.



Circle Drawing: 1hr 09min, lithograph print edition of 25, 2017

Circle Drawing: Lithograph prints (2017 – 2023)

An edition of Circle Drawing: 1hr 09min, 2017 as well as other selected live performance circle drawing artworks, have been digitally scanned / archived (using a large scanning facility, CHD); and have been made into digital lithograph plates.

Editions of 25 + 3 AP

LINE DRAWINGS



Artist Portrait, Line Drawing, at Intervals of Jupiter I Weight of Things, NOLA, 2023

Line Drawing, (2007 – 2023)

The series of Line Drawing artworks are made by using two drawing tasks: in one process, the line is made by drawing with the arm extended back and forth using graphite, while the other, is made by tracing and drawing a line underneath closest to the ground; repeating these processes and performing in front of a live audience, the work has been moving around objects, and made on paper or directly on the wall.

Derived to extend the line; this performance drawing was developed collaboratively with artist, Jane Grisewood (b.1950-d.2023); a series with Grisewood includes 6 live performances between 2007 and 2014.

Each work is site-specific and made to scale in relation to the space; performances are usually 2 – 3 hours in duration.



Line Drawing (3hr) Oct 6 2023, 190cm H x 10m W, 60cm D, at 'Intervals of Jupiter I Weight of Things', NOLA, 2023
MATERIALS: 4B graphite on 220 gsm paper and on the wall (performance to camera) one continuous line with concrete blocks (walking or running, up and over to make the line back and forth).



Line Drawing, II, 2019

In the studio, a series of Line Drawings, using gold to pre-treat the underneath-surface of the paper; this series of line drawings is made with one continuous graphite line (back and forth); with the attempt to exhaust the materials and mark effortfully where the body is strongest till it rips.

Line Drawing 1hr 15min, 120cm H x 100cm W; 2019



Line Drawing, GOLD, 2023

In addition to the studio-based drawings, using gold to pre-treat the surface of the paper, these works layer the gold material and graphite, and (again) are made with the two processes of drawing: one continuous graphite line (back and forth); and another that traces the line underneath.

Line Drawing (Gold) 2023; 100cm H x 120cm W; 2023

HORIZON LINE FILM



Horizon / Distance, (2010- 2023)

Horizon/Distance, are film/video-based artworks that use the camera strapped to the body and running through the landscape.

In 2010 a point in the practice emerged when running became drawing, and running became a way to make a drawing; McCall records the white surfaced landscape and horizon-like treelines.

Addressing 'movement as drawing' and referencing artists such as Richard Long and Jana Sterbak and writings by Catherine de Zagher; the 'line' facilitated a way to move the practice from indoors to outdoors and conceptually carving a line through space.

Artworks comprise a series of edited films/videos: on LCD art screens for installation in editions of 5 + 2AP.

Horizon/ Distance, (stills) 30min 2010



Horizon/ Distance,
30min, 2010

LCD screen
installation

Editions of 5

Horizon/ Distance, (still) 30min 2010



Snowfield,
1min 23, 2023

LCD screen
installation

Editions of 5

Snowfield, (still) 2min 52sec, 2020 – 2023

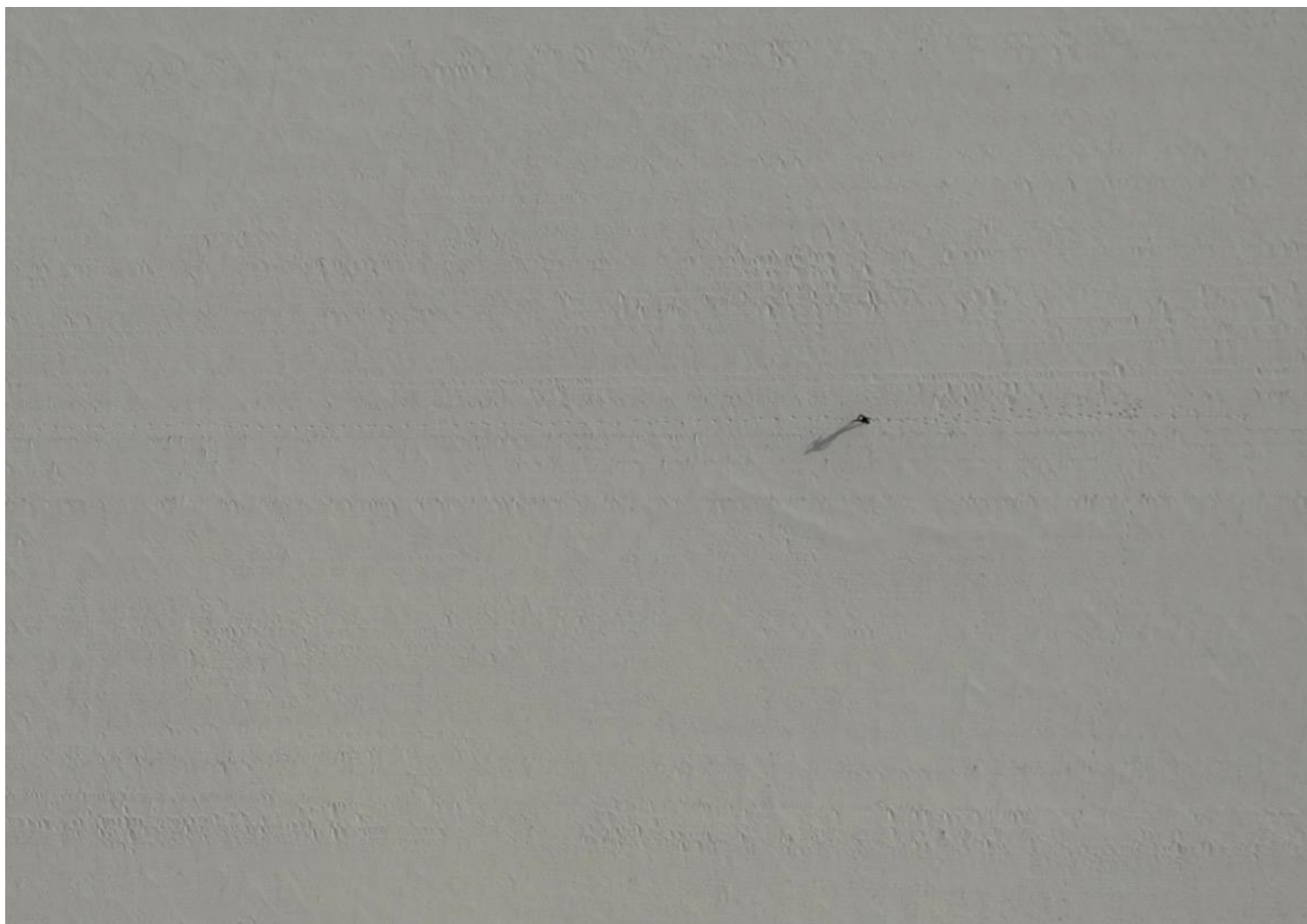


Tunnel
5min 4sec
2010

LCD screen
installation

Editions of 5

Tunnel, (still) 5min 4sec, 2010



Running Field
1min 23, 2023

LCD screen
installation

Editions of 5

Running Field, 1min 23sec, 2023

RUNNING/RESTRAINT



Restraint/Running (2019 – 2023)

‘Restraint/Running’ are performances to the camera made as black and white prints; using a long elastic band attached to the body and part of the infrastructure of the space, either gallery interior or outdoor landscape. Made by running back and forth repetitively, stretching and exhausting the elastic material until it breaks. The work began in 2010, performed and documented in many locations. And was most recently performed for Wright + Doyle in 2022.

Restraint / Running: Wright + Doyle / Somerset UK
photographed by Paul Scala



Restraint/Running: wright + doyle, 2022

Print Edition of 3

Restraint / Running: Wright + Doyle / Somerset UK
photographed by Paul Scala



Restraint/Running: CSM, 2012

Edition of 3

Restraint / Running: Kings Cross, CSM, 2012
photographed by Pat Naldi



Restraint/Running: CSM, 2010

Edition of 3

Restraint / Running: Lethaby Gallery, CSM, 2010

ARTIST PORTRAITS



Artist Portraits, Circle Drawing 4hrs 15min, 2019

n
:

Artist Portraits (2019 – 2023)

Since documenting the Circle Drawing performances and exploring 'the role of an artist' the documentation and recording processes are the basis of this Artist Portrait series.

Selected photographs of (during and post) performances are made in editions of C-type prints.



Rock Portrait,
Lake Nipissing, Canada,
2021

Edition of 3

The act of holding a
25-30kg part of the
landscape (a rock)
became a part of the
practice and Artist
Portrait series.

A collection of Rock
Portraits, including
locations in Canada,
Cyprus, Iceland, and
Spain.

The act of holding
became a live
performance artwork
titled: 'Performing
Rock' (2022 – 23).

Rock Portrait, Lake Nipissing, 90cm H x 128cm W Canada, 2021



Tumbleweed,
Arizona, 2022

Edition of 3

Tumbleweed, Arizona, photograph print, 60cmH x 85cm W, 2021

SHOULDER SCULPTURES



Shoulder Sculpture
2020-2023

A collection of sculptures made primarily of papier mâché and plaster; cast from the body initially these were made as performances to camera; then a series of lithograph prints and sculptures presented on plinths.

The work was made in response to the recovery process of Circle Drawing, 4hrs 15min in 2019.

Shoulder Sculpture I and II, 2022

PROPOSALS

Run Vertical: Running up the Side of a Building

Circle Drawing: Intervals of Jupiter Sound Installation

WEBSITE

caralimccall.com

CV

CARALI McCALL

b. 1981, Ontario Canada; lives and works in London, UK

PhD Fine Art, [Running as Drawing] Central Saint Martin's College of Art and Design, UAL, London, UK

MFA Fine Art, Slade School of Art, UCL, London, UK

BA (Hons) Art & Art History, University of Toronto and Sheridan College, Canada

Exhibitions and Live Performances

- 2023 Intervals of Jupiter I Weight of Things, Gryder Gallery, New Orleans
- 2023 Lines of Empathy, Close Ltd Gallery, Somerset UK
- 2023 Circle Drawing + W+D, Blunk Space, California
- 2023 Lines of Empathy, Patrick Heide Contemporary Art, London
- 2023 Video Sound Archive: S6 Los Angeles

- 2022 'i miss the land but does the land miss me' Art Seen Gallery, Cyprus
- 2022 Guggenheim Museum Bilbao, *Performing Rock (Basque)* 2022
- 2022 Wright + Doyle SS23 collection / artwork featured
- 2022 *Performing Rock*, live performance, Wirksworth Art Festival
- 2022 'Now Nancy' – Soho Radio, guest on Episode: Physicality
- 2022 10 Magazine: Future, Balance, Healing [issue 68]
- 2022 Beyond Beck Road, London UK
- 2022 Levels of Life: Photography, Imaging and the Vertical Perspective. LCC Gallery, London
- 2022 Out of Site public performances / FLOW curated by Beau Coleman, (streamed-live) Chicago
- 2022 Filet Gallery: Mañana Incierto, London UK
- 2022 We were never human: The Bronx Academy of Arts and Dance (BAAD) NYC
- 2022 SÍM Group Show / Exhibition Hall, Iceland
- 2022 MASS CC (Crucible) - Thame-Side Studio Main Gallery UK
- 2021 Hundred Years Gallery, Live Performance, UK

- 2021 C4RD, Centre for Recent Drawing, Residency (with Performance Drawing, co-authors) London
- 2019 An Arm's Reach, Gryder Gallery, New Orleans
- 2018 EMPIRE II, Oaxaca Museum of Contemporary Art, Mexico
- 2017 Jerwood Drawing Prize Exhibition, UK Tour
- 2017 EMPIRE II, curated by Vanya Balogh, Castello (during the 57th Venice Biennale) Venice, Italy
- 2017 Circle Drawing: Live Performance @ International Rural Expo, Huron County, Canada
- 2016 Gallery 46 Whitechapel, drawing performance and installation, London
- 2016 Sight (Un sighted), Metal at Southend-on-Sea, curated by L.Campbell, Southend-on-Sea, UK
- 2016 House of Illustration, Drawn Together, drawing performance, Kings Cross, London
- 2015 Notes on a Table, Drawn Conversations, exhibition, Coventry University
- 2014 Deptford X, London Contemporary Arts Festival, London
- 2014 Seeafar, Folkestone Fringe Festival, Folkestone, UK
- 2013 Draw to Perform, Line Dialogues IV, Performance Space, Hackney, London
- 2012 Again and Again and Again. Vancouver Art Gallery, curated by Daina Augaitis and Emmy Lee Wall, Canada

Artist Talks, Conferences and Residencies

- 2023 Artist Talk + crits, 'Performance Drawing' University of Bolton Art School
- 2023 Bedales School, Artist Talk + workshop, Hampshire UK
- 2023 Churches College, upper Sixth form, Artist Talk + workshop, Hampshire UK
- 2023 Fores Project, residency, London UK
- 2022 Artist Talk, MASS / Turps Banana Programme, Woolwich
- 2022 Out of Site / FLOW Performance Art Symposium; Performative Lecture / Chicago US
- 2022 3RD UCM CONFERENCE ON CONTEMPORARY DRAWING
- 2022 1-Month Residency, SÍM, Iceland
- 2022 Artist Talk – MASS / Turps Banana
- 2022 Talking Heads – Artist Talk, Winchester School of Art

- 2022 Drawing Room: Research Talk, Performance Drawing, with co-authors
- 2021 Artist Talk / Performance Drawing - London Metropolitan University
- 2021 TURPS MASS CORRESPONDENCE COURSE
- 2021 Guest MFA in Studio Art, external examiner/crit. Guelph University, Canada.
- 2021 Remote Visiting Artist: Post Baccalaureate in Studio Lecture Series and crits at Brandeis University
- 2020 Artist Lecture: Bath University, hosted by Robert Luzar
- 2020 Artist Talk: MFA in Studio Art, hosted by Sandra Rechico, Guelph University, Canada.
- 2019 Artist Talk: Art & Art History, Program Lunchtime series at Sheridan College / UTM, Canada.
- 2019 Approaching Estate: Furtherfield Gallery, London

Publications

- 2023 Live Art: Blood, the land and the role of the artist's body: Performance Research Journal, issue 27.8 'On Blood' pp.96-105
- 2021 Artist as Athlete, Drawing Matters, TRACEY Journal, York St John University, Vol.15 issue 1
- 2020 Performance Drawing: New Practices since 1945 [co-author, Bloomsbury Visual Arts Publication].
- 2020 Black Book: Drawing and Sketching [Scientific Journal]. Vol 1 Issue 1: RUN VERTICAL
- 2019 An Arm's Reach, Artist' Book, publication. Printed by Book Works UK. ISBN 978-1-78972-638-1
- 2017 Body, Space & Technology Journal Vol16 SIGHT (UN)SPECIFIC (co-author with L. Campbell and A. Lee).
- 2014 PhD Thesis title, 'A line is a Brea(d)thless Length: introducing the physical act of running as a form of drawing'. Director of Studies: Anne Tallentire, Supervisors: Joanna Greenhill, Jordan Baseman.